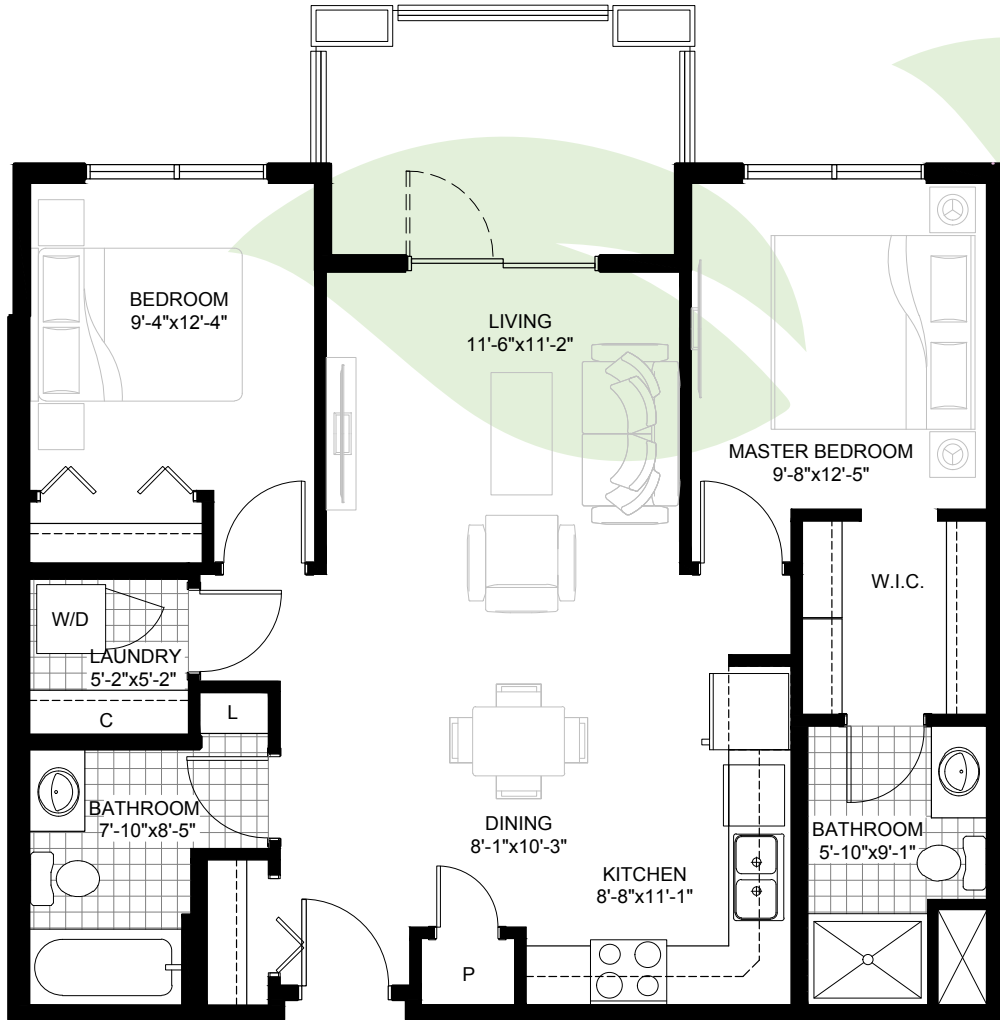




# ABB EY PARK

R E S I D E N C E S

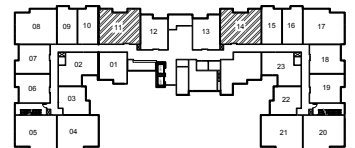


## UNIT FIR

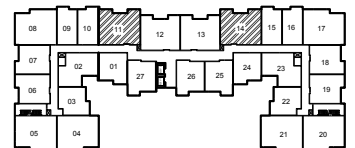
2 BED | 2 BATH • 860 Sq. Ft.

### SUITES

- 111, 114
- 211, 214
- 311, 314
- 411, 414
- 511, 514
- 611, 614



MAIN FLOOR KEY PLAN



TYPICAL 2nd - 6th FLOORS KEY PLAN

780-213-9233

10231 120 Street NW, Edmonton, AB

rentabbeypark.ca