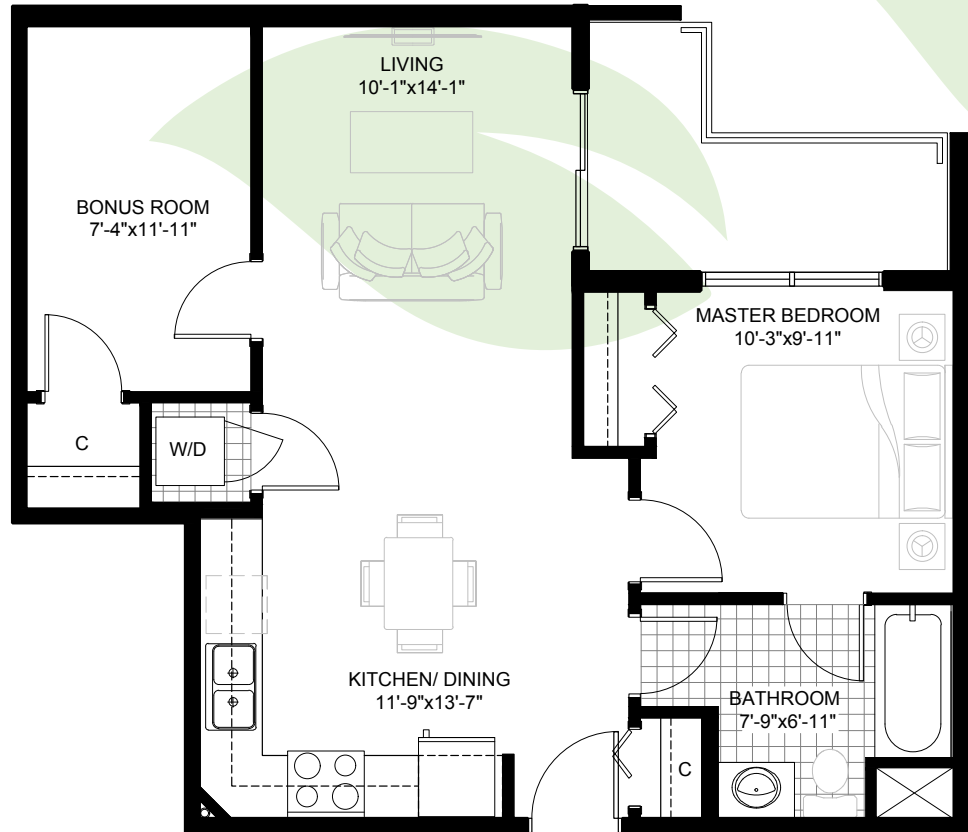




ABB EY PARK

R E S I D E N C E S



UNIT OAK

1 BED + DEN | 1 BATH • 665 Sq. Ft.

SUITES

- 102, 123
- 202, 223
- 302, 323
- 402, 423
- 502, 523
- 602, 623



MAIN FLOOR KEY PLAN



TYPICAL 2nd - 6th FLOORS KEY PLAN

780-213-9233

10231 120 Street NW, Edmonton, AB

rentabbeypark.ca